



# Georgia Equine Rescue League, Ltd.

With Your Help ...  
We Will Make A Difference

Volume #175

[www.gerlltd.org](http://www.gerlltd.org)

April 2010

## Fostering Understanding and Cooperation By Patty Livingston

Equine abuse, starvation, and abandonment are out of control in Georgia and the entire country, for that matter. We largely attribute this growing problem to the closing of slaughter houses, indiscriminant breeding practices and the failing economy.

Because the Georgia Department of Agriculture (GDA), Equine Division is seriously understaffed due to budgetary restrictions, it is impossible for them to meet the demand for adequate intervention in all of the pending cases concerning equine abuse. Realizing that local law enforcement and county animal control agencies have just as much, or more legal authority to investigate and resolve cruelty cases as the GDA, we decided to find a way to learn how much interest they had in joining with us on behalf of horses in need.



Hall County Animal Control agent, David Jones gets "Highway" ready to load onto the GERL trailer to go to his new foster home.

GDA personnel were enthusiastic and readily joined us in making plans to co-host a meeting which would include GERL, GDA, and representatives from sheriff's departments and animal control in ten middle Georgia Counties. It was our plan to introduce GERL, describe the need, and offer our help if these agencies would agree to get more involved in enforcing the Humane Care for Equine Act.

On February 23<sup>rd</sup> we had our first meeting attended by law enforcement and animal control officers from Hall, Gwinnett, Rockdale, Jackson, Morgan, Newton, Barrow, Walton, Oconee and Clarke counties. The meeting was held at the Golden Corral in Winder and was attended by representatives of both entities from five of the ten counties invited. Those who attended were from Hall, Gwinnett, Rockdale, Newton and Walton Counties. We later received communication from Jackson, Barrow and Morgan Counties, requesting information and apologizing for not sending someone. We had also invited the GERL Area Coordinators from those same ten counties. Most of them attended and were able to introduce themselves to their counties' law enforcement. The Area Coordinators play an important role in our plan and it is our hope that they build a relationship with the local animal control and sheriff's department personnel as their point of contact for equine assistance.  
(continued on page 5)

**Who's Who**  
**Georgia Equine Rescue League, Ltd.**

**Board Members**

**Patty Livingston, President**  
(770) 867-0760 / gerlpatty@yahoo.com  
**Ken Archer, Vice President**  
(770) 554-1381 / gerlken@bellsouth.net  
**Diana Kelsey DeMoss / Treasurer**  
(770) 267-0867 / gerlnaners@windstream.net  
**Anne Ensminger / Secretary**  
(770) 464-3348 / missanne612@bellsouth.net  
**Steven Neal / Alternate**  
(706) 342-3422 / gerlsteven@bellsouth.net

**Area Coordinator Director**

**Ronnie Pesserilo**  
(770) 466-4515 / gerlrone@bellsouth.net

**Foster / Adoption Coordinator**

**Donna Pieper**  
(404) 797-3333 / gerldonna@bellsouth.net

**Events Coordinator**

**Susan Archer**  
(770) 554-1381 / susangerl3@bellsouth.net

**Education Coordinator**

**Kelly Lockerman**  
(706) 353-0413 / gerl\_education@yahoo.com

**Volunteer Coordinator**

**Leisa McCannon**  
(770) 267-6912 / gerlvolunteers@yahoo.com

**GERL Advisory Board**

Billy Myers, DVM  
Kenneth Marcella, DVM  
William Baker, DVM  
Jennifer Baker, DVM

**To report a case of equine abuse, call the  
Georgia Department  
of Agriculture's Equine Division  
Monday - Friday / 8:30 am - 4:30 pm  
(404) 656-3713 or (800) 282-5852**

**If you would like GERL to assist with an  
Equine Abuse case call (770) 464-0138**

**Newsletter Editor - Betty Evenson**  
(706) 265-5045 / gerlibetty@aol.com

**\*Please submit all newsletter materials by the  
10th of each month for submission in the  
following month's newsletter.**

**Area Coordinators**

**Rebecca Kilgore - Dawson , Lumpkin, Hall Counties**  
(706) 429-5075 / rkilgore@acs-ebiz.com  
**Rita Benfield - Douglas, Haralson, Carroll Counties**  
(770) 489-0212 / ritabenfield@yahoo.com  
**Juli Williams - Chatham, Bryan, Effingham Counties**  
(912) 234-8458 / reins2go@aol.com  
**Annette Raybon - Paulding , Cobb, Bartow Counties**  
(770) 445-8655 / raybonta@bellsouth.net  
**Susan Wrensen - Cherokee County**  
(770) 331-6947 / swrensen@comcast.net  
**LeighAnn Holton - Glynn, McIntosh, Wayne,  
Brantley & Camden Counties**  
(912) 267-0912 / jpj\_associates@comcast.net  
**Bob & Judy McCrory - Harris, Meriwether, Marion,  
Chattahoochee, Talbot, Troup & Muscogee Counties**  
(706) 582-3268 / ridgeway12@aol.com  
**Anne Ensminger - Newton County**  
(770) 464-3348 / missanne612@bellsouth.net  
**Lynn McMinn - Gwinnett, Walton, Oconee Counties**  
(404) 372-9245 / lynn.mcminn@yahoo.com  
**Tanya Kingsley - Jasper, Butts, Monroe, Jones  
& Putnam Counties**  
(706) 468-0794 / twkings@gmail.com  
**Susie Bond - Morgan & Green Counties**  
(770) 464-4353 / gersusie@att.net  
**Kriston Glushko - Polk & Floyd Counties**  
(678) 757-1138 / krgs@earthlink.net  
**Victoria & Mark Eubanks - Banks & Franklin Counties**  
(706) 335-0122 / Victoria\_is@yahoo.com  
**Judy Ricketson - Lowndes County**  
(229) 300-9926 / gerljudy@hotmail.com  
**Deborah Stewart - Bartow County**  
(678) 721-0712 / deborah4768@att.net  
**Ray Ziebell - Pickens County**  
(770) 354-0293 / razfences@msn.com  
**Marion Cobb - Forsyth County**  
(404) 625-0346 / macobb@bellsouth.net  
**Dotti & Jack Carter - Towns & Union Counties**  
(706) 896-4997 / (706) 835-5677  
frogleap@windstream.net  
**Charles & Linda DeVane - Brooks, Thomas  
& Cook Counties**  
(229) 263-7714 / (229) 560-0844  
**Christina Gilham - Coweta & Heard Counties**  
(770) 605-6753 / spotnotfarm@bellsouth.net  
**Doris & Richard Buckley - Habersham & White Counties**  
(770) 365-7198 / rdbuck@windstream.net  
**Rosa Allen - Habersham, Rabun & White Counties**  
(706) 782-5969 / (404) 316-9417 / rpallen@windstream.net  
**Debbie Whitworth - Elbert & Hart Counties**  
(706) 283-0802 / (404) 805-4409 / rlwdpw@hotmail.com  
**Cynthia Brayton - Rockdale & Henry Counties**  
(404) 374-2980 / cebayton@comcast.net  
**Linda Tucker - Jackson & Barrow Counties**  
(678) 770-7704 / lindahoschton@aol.com  
**Nicki Thigpen - Warren, McDuffie & Columbia Counties**  
(706) 755-4375 / daydreamfarmga@yahoo.com  
**Suzanne Economopoulos - Fulton County**  
(404) 948-1041 / (770) 377-4363 / [zan2970@mindspring.com](mailto:zan2970@mindspring.com)  
**Kristen Hopkins - Toombs, Montgomery, Emanuel  
& Candler Counties**  
(912) 614-7893 [hopkins.kristen@gmail.com](mailto:hopkins.kristen@gmail.com)  
**\*If you are interested in becoming an Area Coordinator  
for a county not listed here, please contact  
Ronnie Pesserilo (770) 466-4515 or gerlrone@bellsouth.net**

**LET ME SAY THIS ... ABOUT THAT**  
**By Patty Livingston, President**

We're getting into the busiest part of the year for GERL. Invitations requesting our presence at various events all over Georgia are arriving daily. Of course, we also have our own functions coming up, starting with our annual Poker Ride at Dawson Forest, followed by the 2<sup>nd</sup> Annual Gene Ensminger Memorial Ride the weekend of April 30-May 2. Late October will again find us at Jake Mountain for our annual Fall Fest. This year we have added a couple of additional fundraisers and I would like to tell you about those.

I mentioned last year that I wanted to plan a special fundraiser in 2010 to benefit the Georgia Dept. of Agriculture (GDA), Equine Division. I have gone around in circles about this, to the point that I fear people are questioning my sanity, and sometimes I question it myself. We first thought about hosting a polo match and auction. Fearing that there might not be enough interest in polo among our supporters, we started to plan for an outdoor concert, BBQ and auction. Even this idea wasn't making me jump out of my seat, if you know what I mean. And then, one day the phone rang and it was Christina Gilham who was calling to update me on a fundraiser that she and Cambria Moon were planning to host on behalf of GERL which would benefit the GDA. She had mentioned it last year and at the time, the plan was to hold a trail ride at McIntosh Reserve over in the Carrollton area. That plan had to change due to the recent flooding which forced the closing of the Reserve. It was then that an even better opportunity presented itself. Christina managed to obtain an invitation to hold their event at Fox Hall Farm in Douglasville. What an amazing stroke of luck (or divine intervention)! This place is simply awesome and is the perfect place to hold such a fundraiser. As Christina began telling me about Fox Hall and describing the plans for a trail ride on the beautiful 1,500 acres along the Chattahoochee River, all I could think about was how wonderful it would be if we could merge our efforts and host the most fabulous event EVER!! NOW, I was jumping out of my seat!



Christina and Cambria have already designed a great flyer and are circulating it widely. The flyer is, of course, posted on the GERL website. Plans are that this one-day event will feature a trail ride with lunch provided, as well as live and silent auctions that evening. The date is June 5<sup>th</sup>. Check out the Fox Hall web site and you'll see that you definitely do not want to miss this event. [www.foxhallsportingclub.com](http://www.foxhallsportingclub.com)

Shortly after the plans for the Fox Hall event were finalized, I received an email from C.J. Farmer, owner of Grove River Ranch in Gillsville. If you have ever had the pleasure of attending a function at Grove River Ranch, then you already know how beautiful and functional it is for hosting equine events. C.J. wanted to know if GERL was interested in co-hosting a fundraiser at her farm. She wanted to sponsor an equine obstacle course and she provided a couple of dates from which we could choose. The GERL Board unanimously voted to form a committee and work under CJ's direction to host this obstacle course event in late August. We have no experience with this type of event but are excited about being introduced to a new activity for everyone to enjoy with their horses.

There are so many wonderful, caring, and giving people who are a part of this organization. I am thrilled that many of them are now coming forward to volunteer and to lead. I am energized by their love for horses and support of GERL. I have heard it said, "Be passionate about what you do and work with great people". Let me say this about that, I am certainly passionate about what I am doing with GERL and I'm surrounded by great people every single day! Thank YOU for that!



**A Note from  
the Secretary's Desk  
By Anne Ensminger**

A recent sunny but cold, Saturday morning found the GERL Board of Directors and many other GERL members at the Morgan County Ag. Center. We were there to help with the most recent Department of Agriculture Horse Sale. These sales are held several times each year and represent the last stage of the Georgia Department of Agriculture's impoundment process. On this day, thirty three horses were sold. If they could speak, no doubt each of the horses could deeply touch our hearts with stories describing the events which brought them to this sale.

Tremendous expressions of gratitude are due to many who made a second chance possible for these horses. First I must mention the hard work of the GDA Inspectors and Volunteers. They have worked with these horses for months and actually took part in the impoundment and rehabilitation of, not only these animals but many before them

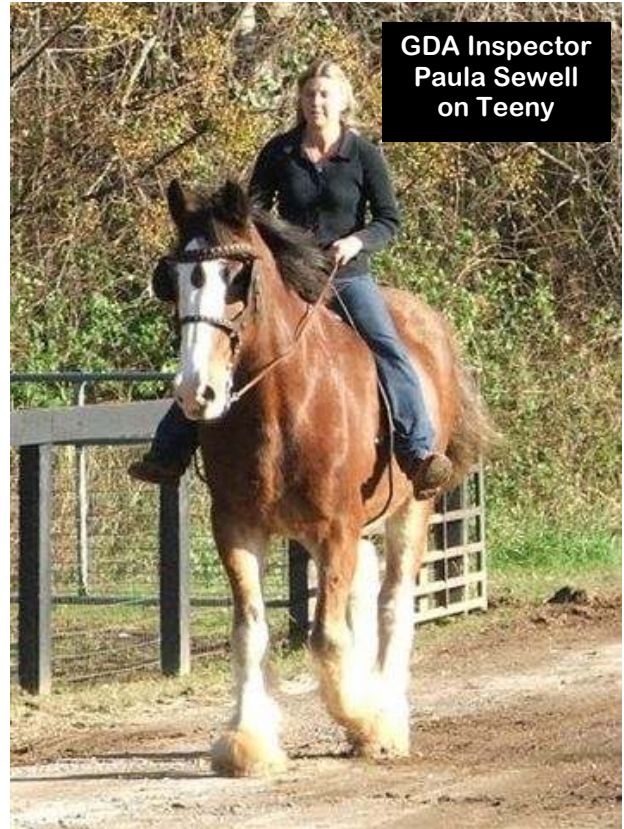
**GDA Inspector Adrienne Cook dressed to work**



as well. Some volunteers came all the way from South Georgia to help with this sale. Auctioneer, Mickey Farmer did his usual outstanding job of getting the highest possible bid for each horse while providing his always, large amounts of incidental entertainment. Commissioner of Agriculture, Tommy Irvin, made a special effort to attend the auction, as did Mary Green, GDA Equine Division Director.

We were also pleased to note that support for this sale was also demonstrated by the attendance of several veterinarians who have worked directly or indirectly to insure the return to health of these, once starved horses. Thanks to Dr. Randy Eggleston, Dr. Michael Lowder, and Dr. Catherine Hall of UGA College of Veterinary Medicine for your support. Dr. Gary Huesner, Animal Nutrition Specialist was there as well as State Veterinarian, Dr. Carter Black and former State Veterinarian, Dr. Rhonda Veit.

Last, but not least, young Heather Stevens, who was responsible for making arrangements to hold this sale at the Ag. Center, as well as many of her friends from



**GDA Inspector  
Paula Sewell  
on Teeny**

Morgan County 4-H worked for the entire day cooking and providing food for everyone. Their efforts earned one thousand dollars which they generously donated to the Impound Program.

I don't know if the sale was considered to be a success since many of the horses brought very low prices but hopefully, they all went to much better situations than those from which they came. When a horse brings less than one hundred dollars, one can only pray that it went to a home where it will receive at least basic care and hopefully some love.

Certainly many who attended the auction were just curious but several were there to bid on the two beautiful Clydesdale Draft Horses which were offered. These gentle giants were trained to ride and to pull a wagon. They were former carriage horses in Atlanta and had been a part of many weddings. Sadly, this impoundment was not the first for these horses. The first impoundment ended when the owner paid back all of the money spent by GDA on rehabilitating the horses and signed a document promising to take proper care of them in the future. GDA Inspectors, disappointed but determined, continued to monitor the horses after they were returned to the cruel owner and ended up having to impound them AGAIN when the owner once more failed to meet basic requirements for their care.

(continued on page 9)

## **Fostering Understanding and Cooperation** (continued from the front cover)

After introductions and a warm welcome, I gave a short presentation to introduce GERL and our mission, remind everyone of the content of the Humane Care for Equine Act, and explained why all had been invited. We wanted them to know that it is not our wish to see anyone's horse impounded. I think we all agree that we would much rather see horse owners keep their animals and learn how to properly care for them. It is our feeling that just the presence of a uniformed officer paying a visit can often turn a bad situation around. We also wanted them to know that we understand that their counties are also undergoing budget cuts and hiring freezes which might be the reason many might balk at taking on something extra. We hope that our offer of support and assistance to law enforcement and animal control agencies might make them more willing to become involved in equine abuse cases. We extended our offer to provide education concerning horse handling, vaccinations, stallion castration, and even temporary holding pens to be erected on county property.



**Shadow - picked up by  
Gordon County Animal Control**

I then shared with them our plan to meet with interested law enforcement and animal control agencies throughout Georgia and build a network of contacts among GERL, the GDA, law enforcement, and animal control so that we can help each other to solve problems concerning equine.

Each officer was asked to fill out a questionnaire asking how many calls they receive concerning equine abuse/cruelty and how they handle the complaints. We wanted to know their level of interest in becoming involved, and in accepting our help. We were delighted to learn that most of these counties are already involved with horse rescue and have worked with Robin Easley, GDA Field Supervisor, who was also in attendance. .



**Highway's  
blind eye**

Robin followed my presentation with additional information concerning the equine cruelty and abuse laws in Georgia. She always has very interesting experiences to share. We were all surprised to learn that there are currently only ten State Inspectors to cover all one hundred fifty nine Georgia counties. Robin is an expert in her field and well-respected by all who know her. We were delighted to have her input.

I left the meeting feeling excited that we had made an impact on this willing group of law enforcement and animal control officers. We realized that we were fortunate in choosing such a congenial group for our first meeting. Many of them hung around to talk about some of the issues they're encountering every day with horses running loose or being abandoned.

I really do believe that we can make a difference for Georgia's horses by committing to repeat this process, ten counties at a time, and offering them our help by providing educational seminars, as well as promoting vaccination and castration services. My attitude is that some will, some won't, so what! Who's Next?

**Susan Archer**  
**GERL Volunteer of the Month for March 2010**  
By Patty Livingston

When I attended my first Fall Fest at Sunburst Stables in October of 1994, the first person I remember meeting was Susan Archer. She was the Auction Coordinator for GERL at that time and was going around to the different camp sites to meet and greet all of the new people.

When the auction actually started on Saturday evening, it was packed with bidders and the merchandise was absolutely awesome. It was one of the most exciting events that I had ever attended and I promised myself that it would be the first of many for me.

Susan's face became familiar at all of the GERL events and we always started looking for her shortly after we arrived. She worked tirelessly and always had a smile. The auctions were always wonderful under Susan's charge. She has a gift for getting people to donate items to benefit causes for which she is passionate. The World's Greatest Auctioneer, Mickey Farmer, loved to pick at her during his bantering and she always had a great come-back.

Not much has changed since those early days. Mickey still loves to pick at Susan and she remains one of the hardest working volunteers at GERL events. She has held many different positions over the years and currently holds the title of GERL Events Coordinator, which she handles beautifully, I might add. I fondly refer to her as our GERL Martha Stewart because she enjoys placing her little decorating touches to make certain that everything matches and is arranged properly.

Susan loves all animals and when an animal comes to live at Tuck Luck Farm, it is there for life. The Archers have several horses and dogs but especially close to Susan's heart are their aging Golden Retriever, "Huge", her beautiful palomino "Handsome", and her totally dependable trail horse, "Mirage"

I worked with Susan on two St. Jude Children's Hospital fundraisers a few years ago. She was in charge of the auction for those events and did a wonderful job. The auctions are the moneymaking part of our functions. They often produce as much as \$6,000 which is a very impressive figure. Susan is to be thanked for that. She still rounds up donations for all of the auctions even though she's not handling them, anymore. She is one of the most generous people I've ever known.

When I found out in November of 2008 that I was going to be the new President of GERL, I knew immediately that I wanted Susan Archer to be a part of the new team. She is passionate about helping all animals and has always been an outstanding GERL cheerleader. You can be certain that Susan will be present at all GERL functions and she will be busy setting up tables, serving food, cleaning up, or whatever else is needed. I applaud you, Susan Archer, for the love and labor you give to this organization!

Thank You!



***WE NEED YOUR HELP!***

**VOLUNTEERS NEEDED TO HELP WITH THE  
GENE ENSMINGER MEMORIAL RIDE APRIL 30th - MAY 2nd**

**WE WILL NEED PEOPLE TO CHECK COGGINS, HELP PARK, SET UP THE AUCTION,  
FOOD SERVICE AND CLEANUP, MERCHANDISE SALES, ETC.**

**PLEASE CONTACT LEISA McCANNON @ [gerlvolunteers@yahoo.com](mailto:gerlvolunteers@yahoo.com)**

**2010  
GERL Calendar of Events**

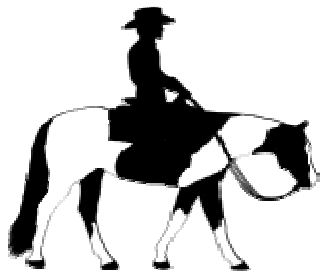
Gene Ensminger 2<sup>nd</sup> Annual Memorial Ride  
April 30 – May 2<sup>nd</sup>  
Ron & Adriane Cook's – Round Oak, GA  
\*See flyer on page 20 for details

GERL Trail Ride & Fundraiser to Benefit the GDA  
Saturday, June 5<sup>th</sup>  
Fox Hall Farm – Douglasville, GA  
\*See flyer on page 29 for details

GERL Competitive Trail Challenge  
Late August – Exact date TBD  
Grove River Ranch – Gillsville  
\*Details in upcoming newsletters

Mark your calendars so that you don't miss any of these wonderful events that will benefit GERL. It's a guaranteed great time ... a benefit for a wonderful cause and a way to see old friends and meet new friends!

**MARK YOUR CALENDARS NOW!**



**Thank You  
Dr. Ken Marcella**

for providing our membership with such informative articles each month.

See page 11 for this month's article



**Please Help!  
GERL receives money  
for the following ...**

Please save Proof Of Purchase seals from bags of these Southern States feeds ...  
Legends, Triple Crown & Reliance

and send them to:

Ginny Scarritt  
4835 Kendall Court  
Atlanta, GA 30342

**Thank You To Our Foster Homes**

**Dotti & Jack Carter**  
for fostering Beau

**Tamma Trump**  
for fostering Hope

**Randy & Lisa King**  
for fostering Shadow

**Jean Long**  
for fostering Lucky

**Bob & Shirley Guhl**  
for fostering Lobo and Tyree

**Patty & Nick Howard**  
for fostering Ekyra & Rosie

**Patty & Phil Henry**  
for fostering Afire Extinguisher

**Patty Livingston**  
for fostering Brutus & Thunder

**Diana DeMoss**  
for fostering Apache & Cheyenne

**Jacki Moore & Leslie Lambert**  
for fostering Vandy

**Anne Ensminger**  
for fostering Honor

**April & Stoney Goss**  
for fostering Highway

**Susan McCullar**  
for fostering Sweet Pea, Gray Baby & Hay Baler

**Steven Neal**  
for fostering Leroy, Smokey & Sable

**Welcome & Thank You  
To Our Recently  
Approved Foster Homes**

Debbie & Steve Arsua  
Belinda & Hannah Carruth  
Glenda Parks  
Cheryl & Ron Popiel

## **Cheyenne Lookin' For Love** **By Cheyenne**

My name is Cheyenne and I am a beautiful Appaloosa pony mare. I have no idea where I was born or who my sire might be but I have wonderful, warm memories of my dam. While I don't know how she slipped from my life, I do know that she is the last good thing I remember before I came to this place.

The people here are kind. Twice a day, Miss Diana comes to my paddock and puts food in my bucket and hay in the hay rack. She speaks softly and I love hearing her voice. I finally let her start rubbing my neck and learned that it feels wonderful.

Recently a young man named Daniel Crowe has been coming to see me. At first I was very suspicious of him but his touch is as gentle as that of Miss Diana and I am beginning to learn how nice it is to be with him. He has been doing some strange things like picking up my feet and throwing a rope all around and over me. It doesn't hurt and it seems to please him, so I just let him do it.

I have had a problem with my left knee for as long as I can remember. I heard Dr. Veit tell Miss Diana that it was chronic inflammation from an old injury and that I should not be ridden. Well darn. I really love the children here who come to pet me and I know they would love to ride. I was beginning to think that riding children might be as rewarding as the rest of my lessons but I guess that is not to be. I am no stranger to disappointment so I will accept this with my usual grace.

GERL, Miss Diana, Daniel, and the children are desperately trying to find a kind and loving person who will be MY person forever. I may not be a saddle pony but my heart is full of love and I am learning more every day about how to please people. It doesn't take much feed to keep me. I don't make much noise and I'm really cute. Mostly I just need for the kind words and touches to continue to be a part of my every day. Please call Miss Diana (770) 267-0867 and tell her that you will give me a chance. I'll do the rest!



**Miss Diana  
& Me**



**Trevor, Corbin & Me**



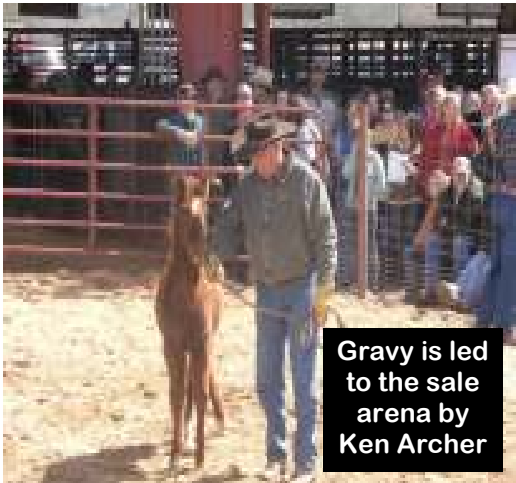
**Daniel Crowe  
& Me**

**A Note from the Secretary's Desk**  
(continued from page 4)

As I said earlier in this article, all of the sale horses were, no doubt associated with a sad story. I don't know the story which might be told by "Biscuit" and "Gravy" but I would love to know it. "Biscuit" was a ten year old grade mare with little to recommend her other than her gentle disposition. She was one of the horses that sold for only a few dollars. "Gravy" was her six month old filly. She brought a bid of fifty dollars. Another darling baby named "Amethyst" sold for twenty five dollars and the auctioneer had to beg for that. I just can't get those two youngsters off of my mind. Another young mare, "Ann H." did not even receive a bid but a second attempt at the end of the sale brought a single, very low bid and she went home with some, hopefully very kind and patient, new owners.



**Amethyst**



**Gravy is led to the sale arena by Ken Archer**

I wanted to tell you about "Biscuit" and "Gravy", "Ann H.", and "Amethyst" because they represent the reason for one of GERL's most urgent efforts. We have become aware that the horse population simply must be reduced as there are; sadly, more horses than there are people to care for them. The only satisfactory solution to this problem will have to begin with mare and stallion owners.

GERL is developing a "Stallions to Geldings" Program which involves financial assistance to encourage gelding of stallions. All stallions brought into the GDA Impound Program, are now gelded before they are sold at auction.

We are urging people to seriously consider the resulting foal before they breed their mares. Please ask yourselves if both the mare and the stallion are animals which are likely to produce a foal that will be desirable and useful to possible future owners? Has thought been given to the very important subject of proper handling of the foal so that it will be gentle and manageable? Do you have the knowledge or the resources to insure the training of the young horse when it gets old enough to ride or drive? Can you financially afford the care of another horse? These are just a few of many considerations.

It makes me sad to think that poor old "Biscuit" was bred in the first place and therefore little "Gravy" was born. "Ann H" is also the result of an unfortunate mating at the hands of a thoughtless and/or careless owner. Before she came to the Impound Barn, this young mare had never received even basic schooling so that she could be haltered or have her feet trimmed, much less receive dental or veterinary care. "Amethyst" is just as sweet and cute as a young horse can be. My sadness deepens as I think that the value placed on these four precious horses was so low that I fear the very real danger that we could see them in another GDA Auction in the future. Let's pray I am wrong about that. It is, however, comforting to know that concerned GDA Inspectors and all of you are out there watching on behalf of the welfare of these, and all other Georgia horses.



**Biscuit**



**A fully rehabilitated Paulk. GERL sponsored this mare in memory of Marty Paulk. God speed, Marty and Paulk.**

**If Your Name Is Listed Here, Your Membership Is Due For Renewal!  
This Will Be Your Last Newsletter Unless You Renew.**

Buzz & Joan Ahrens  
Chuck & Carol Ewing  
Sandra Freeman  
Rebecca Giminez  
Ray & Mary Margaret Lee  
Cheryl & Ron Popiel  
Stan Reich  
Martha Shepherd  
Bill Simpson & Family  
Marya Tietz  
Kay & Jerry Titlow  
Paul & Cheryl Turner  
Lee & Jill Webb  
Patricia West  
Fran Wilde  
Kathleen Womack



**\*Membership form is on the back cover.**

Dear GERL,

We had a 25th birthday celebration for our sweet TWH, "Harley".

Enclosed are the donations to GERL in his honor.

Thanks you for all you're doing.

Sincerely,

Gail and William Coffee  
Jerry and Sherre Long  
Jack and Rebecca Johnson  
Connie Strickland  
JW and MB Feckoury



**No Measuring, No Fuss for  
Clear Water Troughs Contact Us!**

Just drop one tablet in your troughs every 3-5 days and you won't have to scrub again! For more information please visit us on the web at

[www.clearwatertroughs.com](http://www.clearwatertroughs.com)

## **Up Tight- Flexure Deformities in Foals**

**By: Kenneth L Marcella, DVM**

Almost as soon as the New Year's foals begin hitting the ground, the calls start coming in. Some foals will be born with very upright legs, joints that are much too straight and do not bend properly and even heels that will not touch the ground. These foals are commonly said to have "contracted tendons". We now know that it is not really the tendons that have contracted but these problems are due, instead, to a shortening of the entire "musculotendinous unit". The musculotendinous unit encompasses the tendon, its associated muscle(s) and the areas where these structures attach to bones. This entire unit is shortened in relation to the surrounding bones and the joints involved are therefore held in a somewhat closed or flexed position. The proper term for this condition in the horse is "Flexure Deformity".

Flexure deformities are either congenital (present at birth) or acquired (foals born normally but begin to show this condition as they grow and develop). Congenital flexure deformities have been suggested to occur because of uterine malpositioning (an abnormal positioning of the fetus while in utero that does not allow it to move its limbs and results in cramped, flexed joints at birth), nutritional mismanagement of the broodmare during gestation (allowing too rapid fetal growth or inappropriate growth of bones versus tendons and ligaments because of dietary imbalances relating to protein, calories and minerals), exposure to some viruses (an Influenza effect has been postulated) or a possible genetic factor. These foals have been described as "ballerinas" because they walk on their toes and their heels (usually only the front feet are affected) do not touch the ground. Within a very short time the toes of these foals become painful and the stretch of the deep digital flexor tendon attached to the back of the heel adds to that pain. The deep digital flexor tendon is the musculotendinous unit most commonly involved in these toe-touching foals. The young foals become reluctant to bear weight and they do not move and exercise. If the congenital deformity is in the fetlocks or carpi (knees) these joints tend to buckle forward even though the hooves are flat on the ground. Exercise and movement usually stretch out these tight tendons and a large number of congenital flexure deformity cases self-resolve within a few days with simple turnout and exercise. Slightly more severe cases can become worse in a hurry because deformities can be self-perpetuating problems. Exercise might help the foal but the foal's toes are so sore that it will not stand and exercise so the problem gets worse.

Acquired flexure deformities usually reflect problems

with abnormally rapid growth of bone compared to slower tendon/ligament development. These periods of rapid growth are related to developmental patterns so flexure problems of the deep digital flexor tendon (DDFT) affecting the coffin joint tend to occur between 6 weeks and 6 months. The development of the radial bone and the superficial digital flexor tendon (SDFT) tend to show problems in the fetlock joints around ten months to one year. Flexure deformity involving the knee can occur from one to six months though growth of all foals is unique and these time sequences can be variable.

Acquired deformities are influenced by genetics-large rapidly growing foals tend to have more problems, and by nutrition- overfeeding or excess nutrients are implicated in growth imbalances. Pain from injury or trauma can also cause imbalanced use of one limb over another, leading to a flexure deformity as well. These foals with acquired deformities may exhibit clinical signs ranging from mild stiffness or lameness at certain gaits, a reluctance to trot or canter, inability to stand and graze normally, to a square or boxy-looking foot, upright legs or even joints that buckle forward. Early recognition of these flexure deformity conditions is key to the success of the many treatment options available.

Many foals respond to simply being exercised. Physiotherapy-manually stretching the legs two to three times daily can be helpful while some clinicians advocate hopping- holding up one leg and encouraging the foal to hop forward on the other to stretch tendons. Many veterinarians utilize intravenous administration of relatively large doses of Oxytetracycline, which has been postulated to affect calcium utilization in the tendon and to affect cross-linking within the fibers resulting in softening and stretching. Many types of bandages and splints have been used for flexure deformity conditions to help place the joints in correct position and encourage stretching of the tendons. The Dynasplint, a jointed, stainless steel tubing brace that allows normal limb movement while still providing tendon stretch has been very successful in treating many cases of flexure limb deformities (Thoroughbred Times Nov 12, 2005).

Some horse owners do not have the time for intense physiology, they are aware of the potential for adverse reactions with Oxytetracycline use, and they worry about bandage pressure sores and splint rubs with those methods of treatment. For this large number of owners, the most commonly utilized means of treating flexure deformities still involves some method of trimming the hooves and providing for toe extension. Farriers will generally attempt to slowly lower

(continued on the following page)

## Up Tight- Flexure Deformities in Foals (continued from the previous page)

the heels to provide stretch to the flexure tendons. An extended toe is applied to act as a level and allow the foal's own weight to slowly stretch the tendons. These toe extensions are commonly built out of aluminum plates, fiberglass and resin, or various epoxy-like materials that bind to the hoof and can be ground down and shaped into the correct angle and amount of extension. A novel method of flexure tendon deformity treatment utilizes standard hoof trimming with specially cut polyvinylchloride (PVC) pipe pieces attached with epoxy. These pipe pieces are inexpensive and can be quickly and easily sized and cut. They attach to the hoof wall quickly and provide good strong support for extension. They are well tolerated by the foal, and improvement is generally noted within days. Overall results will vary depending on the severity of the condition and the amount of time prior to initiating treatment. Most foals require a few applications to completely resolve the condition.

A small percentage of foals will not respond to conservative treatments and will require surgical intervention. In these cases, the inferior check ligament (a very dense, tight supporting ligament branch in the mid cannon area) is severed resulting in tension release and stretching of the musculotendinous unit. Follow up on these surgical cases still usually involves correct trimming and some type of toe extension.

"Despite the recent advances in breeding, nutrition and farm management, flexure deformities continue to be seen at an alarmingly high rate", says Dr. Steven O'Grady of Northern Virginia Equine, a veterinarian and master farrier. "Interaction between veterinarian and farrier is necessary for a successful outcome when treating flexure deformities", continues O'Grady, "regardless of whether treatment is conservative or surgical". Early recognition of these conditions by the breeder/owner and quick utilization of one of the many techniques for treatment can also be a difference maker in the long-term confirmation, health and athletic potential of that foal. Owners seeking an easy, effective conservative treatment might consider PVC pipe extensions one such method of treatment.

Reprinted by permission of  
Thoroughbred Times

## UGA Horsemen's Association

On February 25, 2010 Patty Livingston and Kelly Lockerman met with members of the UGA Horsemen's Association thanks to the invitation of Ansley Gittens, President.

The UGA Horsemen's Association was begun in 1990 to unite students with a common interest in horses allowing for an open exchange of ideas and knowledge about all things horses. GERL discussed horse rescue in Georgia and how everyone can get involved. Questions about horse slaughter, GDA auctions and opportunities for volunteerism were also fielded. It was an exciting evening that heartened GERL to know that there are many young horse lovers out there ready to lend a hand.

### Group Opportunities

- If you are a club president and would like GERL to come speak to your group please contact Kelly at [gerl\\_education@yahoo.com](mailto:gerl_education@yahoo.com)
- If your group would like volunteer opportunities and needs community service hours contact [gerlvolunteers@yahoo.com](mailto:gerlvolunteers@yahoo.com) to help out at one of our fundraising events
- And remember that we have group memberships available ensuring that your group can stay informed by receiving our monthly newsletter!



## A Special Thank You To Patty and GERL,

I would like to thank you from the bottom of my heart for the privilege to have my two little dwarf miniatures, Sammi and Mac to be the first candidates for your gelding incentive program. Your program will benefit many horses in the years to come, however, for me it meant so much more. Dwarf miniatures often lead a short and painful life and there isn't much assistance or help they can receive. Gelding Sammi and Mac ensures that the dwarf trait is not passed on thru them.



Dwarfism is a genetic disorder. Dwarf characteristics will be passed on through the genetics into their offspring. Whether the genes manifest themselves in this generation or not, they now reside in the horse's DNA and will crop up, be it now or later. There are many degrees of dwarfism and many types of dwarfs; some aren't too bad and can make excellent very lovable pets, while others are so bad they should be humanely put down at birth as they may be unable to stand or function on their own. Usually dwarfism expresses itself in one or more the following characteristics; the horse may be abnormally small and not follow a typical growth rate. They can be more long than tall. The horse's jaw is often malformed with an under or over bite. The legs may not be straight and often one or more legs may be severely twisted. The horse's head may be domed. They may have large heads and very short necks. They may have pot bellies. They may suffer from restricted breathing, arthritis, and numerous orthopedic malformations. In some cases, like Sammi & Mac's corrective ferrier work can be performed using glued hoof extensions, and special shoes to assist the dwarfs to stand flat. In other cases, surgery is required to correct leg deformities.

Sammi and Mac are very special little boys and I



couldn't imagine my life without them. Sammi who is two years old came from a breeder in here in Georgia, and Mac who is nine months traveled long ways from Michigan. Even though I understand that they may not be around for long, I consistently strive in providing them everything they need to live out a good and pain-free life. The boys require special feed along with special vitamins and minerals to help them digest their feed. They also require joint supplements to aid current joint discomfort and possible future arthritis. Sammi and Mac also have their very own farrier who is educated in corrective shoeing. He visits the boys every 4 weeks to trim and re-glue their shoes. The boys are very bonded and protective of each other and don't like to be apart. They have the ability to warm people's hearts while making them smile.

Dwarfism in the miniature horse industry is not something people and breeders like to publicize or talk about, but that does not make it go away. With any breed of animals that attempts to reduce size has to accept dwarfism as an unwanted by-product. The only way of reducing the numbers in dwarf miniatures is to castrate, spay, or no longer breed a stallion or mare that has produced a dwarf. Furthermore, I believe that dwarfs should absolutely not be used in anyone's breeding program, after all, the miniature horse breed standard should be raised, not lowered. With the high cost of Sammi and Mac's nutritional requirements and special farrier care, gelding the boys was simply not possible or feasible. GERL has made this possible and I will forever be grateful! What GERL's gelding incentive program has done for me and the boys means so much more than just the gelding. It means that my boys will not be able to pass on the dwarf genes and traits to others.

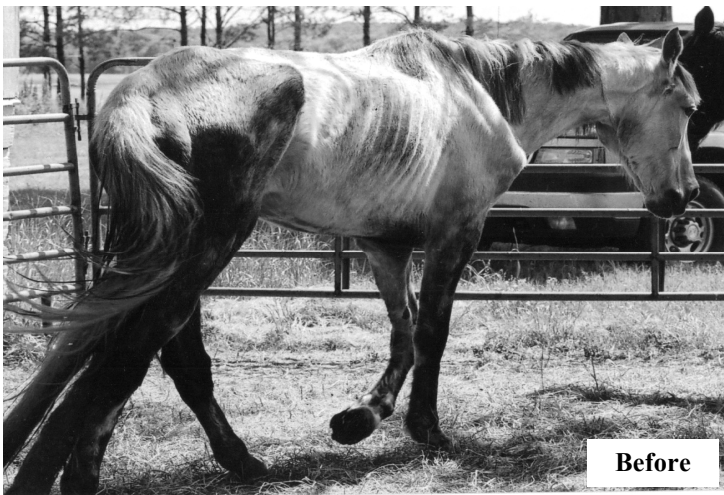
Thank you again GERL for making this possible.  
Sammi, Mac, and Nella

# “Feed a Horse”

Starved and neglected horses impounded by the Georgia Department of Agriculture need your help! Donations will be applied directly towards feed and hay for impounded horses. Currently, the cost for rehabilitating a horse is approximately \$150 per month, per horse.

Make your TAX DEDUCTIBLE donation through the Georgia Equine Rescue League, Ltd. “Feed a Horse” program. We need your help so that these horses can live.

Get involved! Ask your friends, family, co-workers and others to help raise money to feed the horses!



**I would like to make a donation of:**

- \$150.00 per month for 4 months to rehabilitate one horse.
- \$600.00 one time donation to rehabilitate one horse.
- \$ \_\_\_\_\_ per month to help rehabilitate the horses.
- \$ \_\_\_\_\_ any donation is gladly accepted!

**“Feed a Horse”  
Program**

[www.gerlltd.org](http://www.gerlltd.org)

Name: \_\_\_\_\_

Address: \_\_\_\_\_ City: \_\_\_\_\_ State: \_\_\_\_\_ Zip: \_\_\_\_\_

Telephone #: \_\_\_\_\_ Email: \_\_\_\_\_

*Make check payable to:*  
GERL  
Mail to: P.O. Box 328  
Bethlehem, GA 30620

**THANK YOU!**

***Your donation is  
tax deductible!***

## WELCOME NEW GERL MEMBERS

Richard Cohn  
Peter & Louise DiTomaso  
Suzanne Economopoulos  
Dale & Linda Feistamel  
Carol Hackle  
Delores Higgins  
Kristen Hopkins  
Sam & Linda Jeanes  
Allyne Johnson  
Randy & Lisa King  
Larry & Ellen Kinnon  
Lex & Elaine Kromhout  
Chuck May  
Tim Miller  
Darla Money  
Marla Morris  
Eddy O'Hern  
Ken & Brenda Owens  
Matthew Schwab  
Kelly Smith  
Tony & Shannon Smith & Family  
Brian Strange  
Darcy Sun  
Anne Wohlert

Alpharetta, GA  
Loganville, GA  
Atlanta, GA  
Social Circle, GA  
Jeffersonville, GA  
Conyers, GA  
Vidalia, GA  
Bostwick, GA  
Alpharetta, GA  
Good Hope, GA  
Covington, GA  
Vero Beach, FL  
Valdosta, GA  
Senoia, GA  
Resaca, GA  
Barnesville, GA  
Bonaire, GA  
Monroe, GA  
Lawrenceville, GA  
Madison, GA  
Covington, GA  
Stone Mtn., GA  
Lizella, GA  
Marietta, GA

## Referred By

GERL  
Bunch of people!  
GERL  
GERL  
GERL  
Paula LeCates  
GERL  
Diana DeMoss  
Marge Mabey  
Countryside Vet  
Diana DeMoss  
B.J. & Anne  
Patty Livingston  
GERL  
Brian Dees  
GERL  
GERL  
GERL  
GERL  
GERL  
Kathy Chandler  
Melody Sorrells  
Tanya Kingsley  
Marge Mabey

---

## We Need Your Help! Auction Items are Needed

We have upcoming events that will include auctions.

We need you to help by donating auction items. These items can include new or used tack, home décor items, gift certificates, etc. Remember... our auctions are only as successful as the items that we have to offer.

Do you have a beach house? A cabin rental? Do you have a timeshare that you do not use? Perhaps you would consider donating a few nights or a week for one of our upcoming auctions? It's tax deductible and benefits a great cause.

### Thanks You In Advance For Your Support!

If you have items to donate or have additional questions please contact:

Sue Wrensen  
(770) 331-6947

[swrensen@comcast.net](mailto:swrensen@comcast.net)

OR

Patty Livingston  
(770) 867-0760

[gerlpatty@yahoo.com](mailto:gerlpatty@yahoo.com)

**WITH YOUR HELP ...**

**We Will Make A Difference**



# GERL ADOPTABLES



Lobo

**Tyree and Lobo** were both stated as 15yo geldings when we brought them into the GERL adoption program. Based on our vet's assessment, he feels they are closer to 10-12yo. They stand at approx 14.2-14.3hh and stocky (easy keepers). These boys are both VERY sweet and gentle to handle, but have no previous riding experience to our knowledge. There are no physical issues with either gelding that would prevent these boys from being trained under saddle. We will be looking for either companion homes or homes that have the facilities and time to train them properly. These geldings will be adopted out individually.



Tyree

**Apache** is a sweet little gelding, just turned 2. Very people oriented - follows his Foster Mom everywhere. He leads and loads without any problem. We haven't really done much more than that with him, but he seems willing to try most anything. We do not expect him to get much bigger than 14hh. Someone who is willing to put the time in to train him would be perfect.

**ADOPTED**



Apache



Leroy

**Leroy** is a 5yo bay Thoroughbred cross gelding. He stands close to 15.2hh and is gentle to handle. We are looking for a home that wants a horse that is ready to further its ground training and to be started under saddle.



Hay Baler

**Smokey** is a 9 month old dark bay gelding (he appears nearly black), also a son of Leroy, and currently measures about 13.3hh.



Smokey

**Hay Baler** is another 9 month old sired by Leroy, chestnut in color. Currently he stands at 13.1hh.



Sable

**Sable** is a 9 month old bay gelding, son of Leroy.

For adoption fees and additional information please contact  
 Donna Pieper, GERL Adoption & Foster Coordinator  
 (404) 797-3333 / gerldonna@bellsouth.net

# GERL ADOPTABLES

**Fire Extinguisher** is a 6 year old registered Arabian and stands 16 hands. He was injured during his training as a 4 years old. This has caused a slight limp, but he appears to trot and canter in the pasture without pain. Because of the injury, he will be adopted as a companion only horse - he is great with other horses, including older horses. He is very sweet and was one of the favorites at the State Impound Barn. His Sire was the Reserve National Park Champion and his Grand Dam was also a Champion.



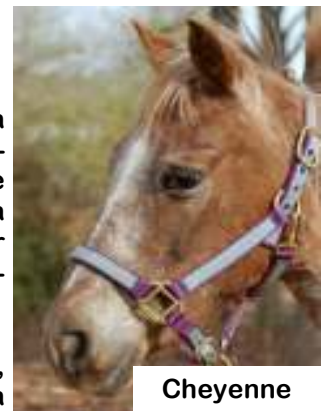
**Charmer** is a 7 year old Tennessee Walking Horse Gelding. Charmer has been ridden on trails, but during the past year, he did not have much riding or handling due to the health of his owner. He currently resides at the home of trainer Tanya Kiselyova who is continuing his training to make sure he is safe and pleasant on the ground and under saddle. For additional information and pictures, visit [www.equinoxhorse.net/Charmerproject.html](http://www.equinoxhorse.net/Charmerproject.html).



**Brutus** appears to be a 20+ year old Morgan cross gelding. He was an extremely gentle stallion when he came into our program, and was successfully gelded with no problems. He has been socialized/pastured with both mares and geldings and has gotten along with all. His foster mom has now ridden him on trails. He doesn't seem to have any health problems and has good feet. We believe he will make an intermediate rider a great mount.



**Cheyenne** is a red roan pony mare, about 13.2 hands. She is a very easy keeper. Although shy when she first came into our program, Cheyenne has gentled very nicely and is a very calm pasture mate. Due to a front knee injury, she would best be suited as a companion only, but to the right home, could possibly be used for very light riding by a smaller child (maybe lead line). We are currently assessing whether she is saddle trained.



**Gray Baby** is a 16yo flea bitten grey mustang mare, about 14.1hh, carrying the mustang brand on the left side of her neck. She has a very sweet disposition and loves to be brushed. Her foster mom has put a Western saddle on her and she seemed very at ease with it, so we believe she has been ridden before. As she gains a bit more weight, we will work with her further to determine her level of training. We are looking for a home that is ready to give her a job.

**For adoption fees and additional information please contact  
Donna Pieper, GERL Adoption & Foster Coordinator  
(404) 797-3333 / gerldonna@bellsouth.net**

**Countryside  
Hospital  
For  
Animals  
Jersey, GA  
770-788-PETS  
countrysidevets.com**

**Offers GERL members  
10%Off  
vaccines and Coggins tests**

**Puttin On The Feed Bag  
Potato Soup**

- 6 Large Potatoes - Peeled and Diced
- 1 Can Chicken Broth
- 2 Teaspoons Butter
- 1/4 Cup Diced Onion
- 2 Celery Stalks - diced
- 1/4 Teaspoon Salt
- 1/4 Teaspoon Pepper
- 1 Large Can Condensed Milk
- 2 Tablespoons All Purpose Flour

Peel and dice potatoes into 1 each cubes. Place in soup pot. Boil in just enough water to cover. When potatoes are tender mash them in the pot but don't drain the water. (I don't mash all of mine cause I like some chunks).

Add chicken broth salt and pepper to soup pot. Set on low heat and let simmer while you saute chopped onions and celery in butter. Add to soup pot when celery is tender and onions are clear. In a small bowl, mix milk and flour. Add to soup pot and mix well.

Let simmer on medium heat for 15 minutes stirring frequently.

We garnish ours with bacon bits, cheese and some green spring onions.

Serves approx 6 people.

Submitted by Leisa McCannon



**Feed Bag Recipe  
Submissions**

Do you have a wonderful, easy recipe that you would like to share?

Putting On the Feed Bag is a new section in our newsletter and we want your suggestions.

Please submit your recipe contributions to [gerlbetty@aol.com](mailto:gerlbetty@aol.com)



**Pulaski Prison Impound Wish List**

- |                          |                          |
|--------------------------|--------------------------|
| Bleach                   | Shampoo/Conditioner      |
| Water Hoses              | Show Sheen               |
| Listerine                | Dewormer                 |
| Antibiotics              | Antibacterial Soap       |
| Feed/Treats              | Hoof Care Tools/Products |
| Feed Buckets             | Weight Tapes             |
| Mane & Tail Brushes      | Fence Supplies           |
| Wound Treatment Products | Horse Blankets           |
| Pooper Scoopers          | Feed Containers          |
| Salt & Mineral Blocks    | Digital Thermometer      |

Please call Patty Livingston (770) 867-0760 if you would like to donate any items to the Pulaski Prison Impound.

**North Georgia Mounted  
Search & Rescue  
("NGMSAR")**

**Call for info and date for next meeting.**

Col. Bob Eikenberry  
(706) 429 9918  
[forgednstl@windstream.net](mailto:forgednstl@windstream.net)  
or  
Steve de Lyra  
(706) 265 8182  
[stevd@windstream.net](mailto:stevd@windstream.net)

## Thank You For Renewing Your GERL Membership

Susan & Ken Archer  
Virginia B. Bilbo  
Judy Bradberry  
Jack Cashin  
Rich & Sue Chalmers  
Kathy & Lamar Chandler  
Barbara Clark  
Libby Driskell  
James Elzey  
Gloria English  
Katy & Jimmy Futrelle  
Christina Gilham  
Bob & Shirley Guhl  
Susie Hansen & Scott Harris  
Gillian Hayward & Family  
Jeff Hetsko  
Deborah Hines  
Dan Hutchins  
Catherine & Bobby James  
Brian & Connie Keener  
Karen Kight  
Leisa & David McCannon  
Lynne McClintock  
Elizabeth & Brian Mitchell  
Debbie & Lamar Mullinax  
Steven B. Neal  
Beulah Newton  
Krista Pezold  
Donna Pieper & Keith Fleming  
Debbie Powell  
Heather Russell  
Ruth & Doug Sarrett  
Larry & Sherry Shogren  
Robyn Smith  
Thomas Threatt  
Heather Wages & Family  
Valerie Warburton  
Jill Williams  
Julia & Charlie Williams  
George & Charlotte Zubowicz

Loganville, GA  
Conyers, GA  
Auburn, GA  
Alpharetta, GA  
Powder Springs, GA  
Jersey, GA  
Statham, GA  
Dawson, GA  
Cumming, GA  
Conyers, GA  
Temple, GA  
Carrollton, GA  
Social Circle, GA  
Monticello, GA  
Snellville, GA  
Atlanta, GA  
Thomasville, GA  
Davisboro, GA  
Jasper, GA  
Hoschton, GA  
Dublin, GA  
Covington, GA  
Snellville, GA  
Villa Rica, GA  
Covington, GA  
Rutledge, GA  
Silver Creek, GA  
Marietta, GA  
Loganville, GA  
Cordele, GA  
Alpharetta, GA  
Madison, GA  
Marietta, GA  
Monroe, GA  
Hoschton, GA  
Monroe, GA  
Ballground, GA  
Bostwick, FL  
Savannah, GA  
Warm Springs, GA

## Bar G. Feed Helps GERL

Bar G Feed, located in Bishop, was one of the supporters of the recent GDA horse auction that was held at the Morgan County Ag Center on February 27<sup>th</sup>.

Three youngsters representing Bar G, Morgan Griggs, Ruthie Dunn and Macon Turner sold raffle tickets for a bucket of horse goodies and donated the money to GERL. The winner of the raffle was our favorite auctioneer, Mickey Farmer. Mickey graciously turned around and auctioned off the bucket to the highest bidder for \$55.00.

We want to thank Bobby and Donna Griggs at Bar G Feed for coming out and supporting this special auction and especially, to these three kids who wanted to help the horses by raising money and awareness of what GERL is all about.



Mickey Farmer, Macon Turner,  
Ruthie Dunn & Morgan Griggs

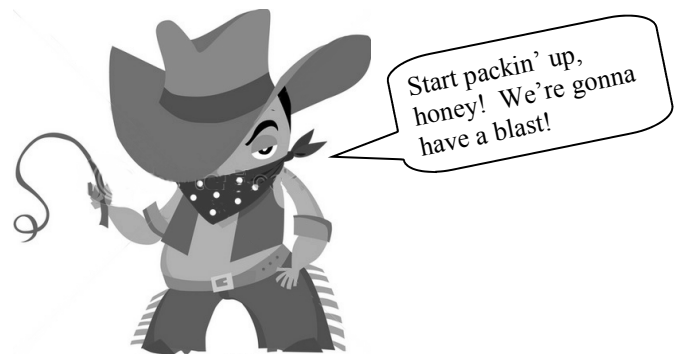
**CHECK OUT GERL'S  
CALENDAR OF UPCOMING EVENTS  
on  
PAGE 7**

# 2nd Annual GENE ENSMINGER MEMORIAL RIDE TO BENEFIT THE GEORGIA EQUINE RESCUE LEAGUE

## April 30-May 2, 2010

Fundraiser to be held at the farm of Ron & Adriane Cook,  
Round Oak, GA, near Monticello & Hillsboro.

- Cross Country riding in the Oconee National Forest
- Bring a dish and join us for Pot Luck Dinner  
Friday Night
- Breakfast Sat. AM, Dinner Sat. PM and Breakfast  
Sunday AM included!
- Dance on Saturday Night
- Live Auction Saturday Night with  
Mickey Farmer—Famous Auctioneer!
- Silent Auction on Saturday
- Limited Power and water hook-ups available
- Plenty of primitive camping
- High ties provided with power sites, pens o.k.
- GERL Merchandise will be for sale on site
- Please pre-register - space goes quickly!!
- Two night minimum for electric sites

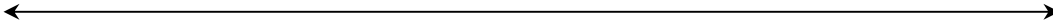


Contact Patty Livingston @ 770-867-0760 or  
gerlpatty@yahoo.com for more info.  
Registration forms available on our website:  
www.gerlltd.org

# Registration Form - Gene Ensminger Memorial Ride

**If registered before April 16th:**  
 GERL Members: Adults \$55 / Children 12 & under \$ 25  
 Non-Members: Adults \$65 / Children 12 & under \$30  
**If registered April 16th or after:**  
 GERL Members: Adults \$65 / Children 12 & under \$30  
 Non-Members: Adults \$75 / Children 12 & under \$35

There are a limited amount of power and non-pottable water hook-ups, sites will be assigned as registration forms are received.  
 All reservations must be made on this form through GERL, please do not call Ron & Adriane Cook!  
 For further information, please contact Patty Livingston, 770-867-0760 or gerlpatty@yahoo.com  
 Additional forms available on our website: gerlltd.org

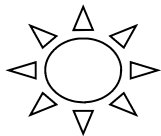


All attendees must register, riders and non-riders alike!  
Single & non-family members, please register separately.  
See website for additional forms: gerlltd.org

Name \_\_\_\_\_  
 Address \_\_\_\_\_  
 City \_\_\_\_\_ State \_\_\_\_\_ Zip \_\_\_\_\_  
 Phone \_\_\_\_\_ Email \_\_\_\_\_

## Negative Coggins Required

<i>Adult Campers/GERL Members</i>	_____	<i>X \$55 ea. =</i>	_____
<i>Adult Campers/ Non-Members</i>	_____	<i>X \$65 ea. =</i>	_____
<i>Children/GERL Members</i>	_____	<i>X \$25 ea. =</i>	_____
<i>Children/Non-Members</i>	_____	<i>X \$30 ea. =</i>	_____
<i>Power &amp; Water Site</i>	_____	<i>X \$20 per night =</i>	_____
<i>Primitive Camping</i>	_____	<i>X \$10 per night =</i>	_____
<i>Sat. nite only: Dinner, Auction, Dance</i>	_____	<i>X \$25 ea. =</i>	_____
<i>After April 16th: Late registration fees: Add \$10/adult and \$5/child =</i>			_____
		<i>Total Amount Due =</i>	_____
		<i>50 % deposit due at time of registration =</i>	_____
		<i>Amount Due at Check-In =</i>	_____



**Please make checks payable to: GERL**  
**Mail to: P.O. Box 328 Bethlehem, GA 30620**

## **The Story of Dwarf** **By Nancy Bogardts, Mansfield Impound**

Draft horses! Word was already spreading while we were working at the GDA's equine auction at Berry College last February. One of the Inspectors had been working a case involving draft horses and she was very worried about them. The owner had not followed through with the recommendations she had made and it appeared that they may be impounded. Never having been even close to a draft horse, several of us wondered if they might break down fences or drag us around like rag dolls but we soon learned that our fears were unfounded and these horses were very gentle, well trained Clydesdales.



When "the boys" arrived at the Mansfield impound a few weeks later we all were amazed at their size but it was their kind and gentle spirit that won us over. Midget, Teeny, Tiny, Little Bit and Dwarf displayed ribs and hip bones which were easily visible even through winter coats. Their feet were in extremely poor condition. In spite of all of this, they were sweet natured and easy to manage. Some of their hooves required daily soaking as well as other treatments and I'm sure, at times, it wasn't pleasant for them. We all felt certain that they understood that we were trying to help.

We all felt very disappointed when several months later, after each horse had gained up to their normal weight, the horses were returned to their original owner. Current Georgia law gives owners of impounded horses the right to pay for accumulated care costs and sign an agreement essentially stating that they will care for the horse properly in the future and the horse (s) will be returned to them.

GDA Inspectors continued to check on the horses and eventually were forced to again impound these gentle giants. All of the horses had lost weight and their feet had not been cared for properly. Sadly, this impoundment did not include Midget. He had died on the owner's property.

Dwarf suffered the most serious hoof issues of the remaining horses. He had previously foundered and his hooves were severely damaged due to a long period of untreated thrush. He had to be stalled in order to keep his feet as dry as possible. He was a favorite with the Inspectors and volunteers. We were grateful for the opportunity to spend so much happy time with him. I never left his stall without giving him a long hug while standing underneath his massive head and against his chest. We kept his mane neatly braided and his coat brushed to a sheen. When the weather was pretty we were able to turn him out to be with his buddies.

A long time Mansfield barn volunteer, George Bailey, made it his personal mission to help Dwarf. In addition to the farrier engaged by GDA, George asked his own farrier, at his personal expense, to come out and evaluate Dwarf's foot problems. The farrier provided his previously very successful "secret recipe" for a thrush remedy and George purchased the ingredients and supplies himself, often coming out to the barn just to help treat Dwarf's feet. George also researched a shoeing stock that would assist us in doctoring Dwarf's feet and then donated some of the money toward its purchase (many thanks to GERL for the remainder of the money!) and then drove to South Carolina to pick up the stock and deliver it to the Mansfield Impound Barn. Others went above and beyond the call to assist Dwarf as well. Dr. Lowder and his students from the UGA Vet School examined Dwarf and advised us regularly on his care. Caring Clydesdale owners occasionally stopped by to offer advice and suggestions. Another local farrier, who just happens to be the husband of one of the GDA Inspectors, put corrective shoes on Dwarf in an effort to ease his constant pain. We all loved that horse so much and desperately wanted a good outcome for him.

Unfortunately, Dwarf's foot problems had gone on for much too long and his coffin bones penetrated the sole causing extreme pain. The damage was beyond repair. Dwarf was euthanized on March 2, 2010. I couldn't help but wonder if coffin bones came by their name for just this sad reason. When I walked into the barn this weekend and didn't see his big face looking out of the stall ...patiently waiting for his breakfast, I knew it was true and that he was really gone. I hope he has had a happy reunion with his buddy Midget and I hope that he knew how much we loved him.

## **RL Poker Ride a Great Success** **By Patty Livingston**

I've just come home from the Poker Ride at Dawson Forest in Dawsonville. It was a great success, despite the rain. (It seems like I add those 3 words to almost everything I write about, lately.) Believe it or not, we didn't have any rain during the actual poker ride and about 20 riders turned out to brave the mud. The rest of us hung out in camp and enjoyed the sun that kept popping out and the great fellowship of the other 45 or so people who just came to support GERL. We had approximately 70 people who showed up and we made a little over \$1,300.00. Needless to say, I was very pleased with the results.

I want to personally thank all of the volunteers who showed up to work. Without you we would not be able to put on a single fundraiser. These are the people who showed up to help and if I forgot anybody, please know that you are needed and appreciated.

Sonny Hinote	Leisa McCannon
Greg Masey	David McCannon
Marge Mabey	Melinda Kelsey
Sandy Stephenson	Mel Sorrells
Amy Cox	Amy Burgess
Gail Mann	Russell
Pat Dean	Diana DeMoss
Sue Wrensen	Reponda Bailey
Ken Archer	Margaret Korges
Susan Archer	Dorothy Thomas
Ray Ziebell	Anne Ensminger
Pierrette Ziebell	Marie Simrod
Betty Evenson	Duane Evenson
Deborah Stewart & granddaughter, Kaitlin	

Sonny Hinote cooked up another delicious lunch for us just as he's done for many past years. Sonny and Greg Masey were also responsible for helping to secure some of the food items. Greg's employer, Wood Fruitticher Grocery Company, was kind enough to donate the side items and chicken breasts. Thanks to Alan Brown, owner of Processors Co-Op, who donated the meat, soup and desserts for the event as he's generously done for years. Without supporters like these, it would be very difficult to make the profits we do at our fundraisers.

Reponda Bailey won the \$100 cash prize for the best poker hand with a Full House (3 Jacks and a pair of 4's) and promptly donated all of the money back to GERL. Thank you Repo! She later told me that she didn't even know what a Full House was! Tamma Trump won a bucket full of horse goodies for second place with 3 of a kind.



Thanks to all who came out to support this event and help raise money to take care of more horses!

Editor's Note: A special thanks to GERL member and volunteer, Greg Masey who arrived early ... and stayed late. He never stopped working ... Great job, Greg!

# POKER RIDE 2010



# POKER RIDE 2010



The Mules were well represented at this ride. We had nearly as many mules as horses.



# POKER RIDE 2010



**FOR  
SALE**

# GERL Merchandise

**DRESS  
in  
GERL  
STYLE**



Adult Long  
Sleeve Shirts  
Black, Chocolate and  
Cobblestone



Youth Sweatshirt Navy M-XL \$15.00  
Long Sleeve T Navy M-XL \$14.00  
(not pictured)



Adult Sweatshirt  
Deep Forest and Navy  
S-XL \$17.00  
XXL \$20.00



Ladies Long Sleeve Shirts  
Pink, Chocolate and Navy  
S-XL \$16.00 XXL \$18.00



Ladies Polo Shirts  
S-XL \$20.00 XXL \$24.00  
White, Light Blue,  
Yellow Haze, Heather Grey

Men's Polo Shirts  
S-XL \$20.00 XXL \$24.00  
White, Light Blue,  
Yellow Haze, Heather  
Grey



**Fright Fest 2009**  
Adult Long Sleeve T  
S-XL \$10.00 XXL-\$12.00  
Adult Sweatshirt  
S-XL \$12.00 XXL-\$14.00  
Youth Long Sleeve T  
M-XL \$9.00  
Youth Sweatshirt  
M-XL \$11.00



*Black only*



T-Shirts S-XXL All sizes \$10.00  
Blue Spruce, Oatmeal and Cactus

**Call Diana DeMoss 770-267-0867 To Order! We take Visa, Master Card and Discover!**

**Twenty Years Experience in**  
**Equine Dentistry**  
**Billy C. Myers, DVM**



Show your Georgia Equine Rescue League  
Membership Card for Discounts

**Will Travel for  
Multiple Horses**



**PLEASE CALL FOR AN APPOINTMENT**  
**Countryside Hospital for Animals**  
**Jersey, Georgia**  
**(770) 787-4711**  
**[www.countrysidevets.com](http://www.countrysidevets.com)**



The Georgia Equine Rescue League is proud to sponsor  
a Benefit Trail Ride at Foxhall Farm

*Organizers:*

Christina Gilham (770) 605-6753  
Cambria Moon (770) 597-4438  
E-mail: foxhalltrailride2010@willowhillfarmllc.com



*Beautiful Facility Generously Donated by:*



[www.foxhallsportingclub.com](http://www.foxhallsportingclub.com)

**Demonstration by Drew Olsen**  
[www.drewolsen.com](http://www.drewolsen.com)



**LIVE GDA**  
**Equine Auction**

**Saturday June 5, 2010**

*Registration/Check-in Starts at 9am!*

**Proceeds to Benefit the GDA - Equine Division**

8000 Capps Ferry Road | Douglasville | GA

- Enjoy breath-taking terrain at one of Georgia's Premier & Private Equestrian Facilities!
- Includes Lunch & a Drink!
- All proceeds will directly benefit horses in our state and your fee is tax-deductible!
- LIVE & Silent Auctions on Quality Items Donated to G.E.R.L.!
- Short Equine Messages!

Come out and ride at the gorgeous Foxhall Farm to benefit horses impounded by the Georgia Department of Agriculture— Equine Division! Truly an event unlike any other, we will have guided trail rides for beginners through advanced, clinicians such as Drew Olsen from Southern Horsemanship who will do a brief demonstration, an Equine Massage Therapist, a live auction of rehabilitated GDA horses and a live and silent auction of horse items donated to G.E.R.L. All disciplines are welcomed and the donation is \$25 per rider if you pre-register, which includes lunch. If you would like to just come out and enjoy the festivities and have lunch, the donation is \$10 per person if you pre-register. Be sure to bring your checkbook and leave room on the trailer, as we are doing this to raise funds for the horses and would also like to find a few lucky GDA horses a ride home! For additional info. and registration forms, please e-mail event organizers or visit [www.gerltd.org/events.htm](http://www.gerltd.org/events.htm).

**PLEASE COME OUT AND JOIN US FOR A GREAT AND TAX-DEDUCTIBLE CAUSE!!!**

### **Our Thoughts & Prayers Are With You**

GERL has learned that Mike Medlock is again facing a fight with cancer. He is scheduled to undergo both chemotherapy and radiation over the next few weeks. Mike is a long time and faithful GERL member and has been a tireless worker for the Georgia and National Equestrian Trail Systems. He asks for our prayers that he will receive complete healing and suffer minimal side effects from the treatments. Mike, we are honored that you requested our prayers and it will be done!

Sylvia Mooney. We hope you are feeling better soon!

### **Thank You For Donating To Our Feed A Horse Program**

Susan & Scott Harris  
Lee Hager  
Constance Burchett

### **Donations in Honor Of**

Amelia Bolton by Christopher Bolton

Ken & Susan Archer, who fostered Pretty Boy.  
Thanks to all of GERL by Cheryl Bray.

Spy by Chris & Anna Wohlert

Dr. Billy Myers by Marshia Milam Medford  
for all of the kind, gracious, humane things he does

Marco by Butch & Sheryl Slate

Robin Easley, GDA and her wonderful  
staff and volunteers by Ruth Sarrett

of our volunteers by Bobby & Catherine James

### **Donations In Memory Of**

Lady, a very sweet & special horse,  
by Beulah Newton

Melissa, Ginny Scarritt's mare  
by Gene Rowsey

Roses for Silko  
by Suzanne Economopoulos

Dandy  
by Kristen Hopkins

Pat Harmon  
by Delores Higgins

Our passed friends  
by Bobby & Catherine James

Thomas Nash  
by Brian & Connie Keener

### **Thank You**

Allyne Johnson, owner of Horse Authority,  
for cleaning the GERL blankets.  
They look new again!

Sandy Bryant for donating the horse  
blankets and tack box  
for the Pulaski Impound

### **Thank You**

to the Flohr Family Foundation  
for your years of generous support!

### **Thank You For Your Donations And Continued Support**

Steven Neal  
Tim Miller  
Matthew Schwab  
Samantha Ball  
Debbie Powell  
Krista Pezold  
Symetra  
Jack Cashin  
Valerie Warburton  
Lynne McClintock

### **Thank You For Your Change Jars**

The Stock Market - Conyers, GA  
Pampered Pony - Monroe, GA



## BUSINESS CARDS



**R.A. FENCING**  
FOR HOME & FARM  
**R.A. ZIEBELL & CO.**  
SPECIALIZING IN HORSE SAFE FENCING  
All Types of Wood-Vinyl-High Tensile Wire-Decorative Gates-Masonry Entrances

**ELECTRO-BRAID** 770-894-3939 **Heritage**  
FENCE Dealer RAY ZIEBELL Vinyl Products  
OWNER

EQUINE BOARDING FACILITY & BREEDERS OF  
SILVER DAPPLE SPORT HORSES



Cambria and Eric Moon

INFO@WILLOWHILLFARMLLC.COM  
WWW.WILLOWHILLFARMLLC.COM

862 Addison Road • Buchanan, GA • 30113



**Marion Cobb**  
MCJC, Inc.

835 Spring Valley Drive • Cumming, GA 30041  
Telephone: (404) 625-0346 • Fax: (770) 887-3147  
macobb@bellsouth.net




Dealing With Your Dog  
Obedience & Behavioral Help  
Trainer: Jessica  
Group & Private Lessons  
www.dealingwithyourdog.com  
678-725-3203



**DEBBIE & LAMAR MULLINAX**

1575 Access Road  
Covington, GA 30014  
www.sundownerofgeorgia.com

Toll Free: (877) 786-8724  
Tel: (770) 385-0419  
Fax: (770) 788-0574  
Email: trailers@sundownerofgeorgia.com



★ Boarding  
★ Training  
★ Rehabilitation

**Haley Equestrian**  
**Laura Harrell**  
Home: 770.207.5251  
Cell: 706.892.5153

300 Sheets Cemetery Rd. • Good Hope, GA 30641

## TIMOTHY and/or ORCHARD ALFALFA HAY FOR SALE

Let us be your source  
for excellent Midwestern Alfalfa-Mix horse hay  
at an extremely competitive price.

We offer several varieties of hay (lower to higher % of alfalfa with a Timothy / Orchard grass mix). Samples have been tested & lab analyses confirm that this is excellent horse hay. We work directly with the grower to bring this hay to Georgia & the SE. Contact us for pricing, samples, etc.

**HORSE HAY DIRECT, LLC**  
Betty K. Evenson  
(706) 265-5045 • (706) 265-9708 • gerlbetty@aol.com

Georgia Equine Rescue League  
PO Box 328  
Bethlehem, GA 30620  
(770) 464-0138  
www.gerlltd.org

PRST STD  
US POSTAGE PAID  
PERMIT #1037  
STONE MOUNTAIN, GA

**“With Your Help ... We Will Make A Difference”**

**Membership Application**

New Member: \_\_\_\_\_ Renewal: \_\_\_\_\_ Date: \_\_\_\_\_

Name: \_\_\_\_\_

Address: \_\_\_\_\_

City / State / Zip: \_\_\_\_\_

County: \_\_\_\_\_

Phone (home): \_\_\_\_\_ (cell): \_\_\_\_\_

E-mail Address: \_\_\_\_\_ Referred by: \_\_\_\_\_

\_\_\_\_\_ I am a horse owner

\_\_\_\_\_ Although I do not own a horse, I would like to support the GERL

\_\_\_\_\_ I am interested in becoming a GERL Foster Home

\_\_\_\_\_ I am interested in becoming a GERL fundraising event volunteer

Annual membership dues are:

\$35.00 Family \_\_\_\_\_ \$25.00 Single \_\_\_\_\_ \$15.00 Junior (12 & under) \_\_\_\_\_ Age: \_\_\_\_\_

\$50.00 Club, Organization or Business \_\_\_\_\_ \$1000.00 Lifetime \_\_\_\_\_

Misc. Donation: \$ \_\_\_\_\_

In Honor of \_\_\_\_\_ for the amount of \$ \_\_\_\_\_

In Memory of \_\_\_\_\_ for the amount of \$ \_\_\_\_\_

**Make check payable to: GERL  
Mail to: GERL - P.O. Box 328 - Bethlehem, GA 30620**